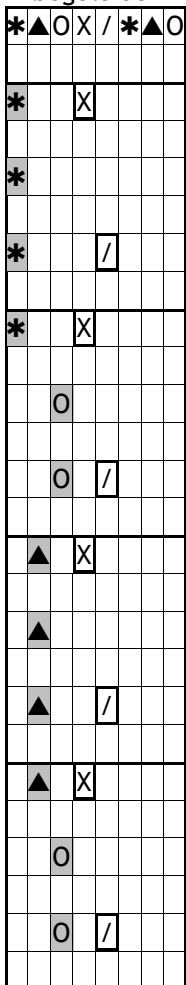
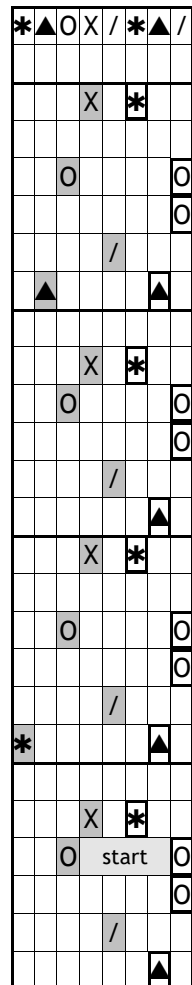
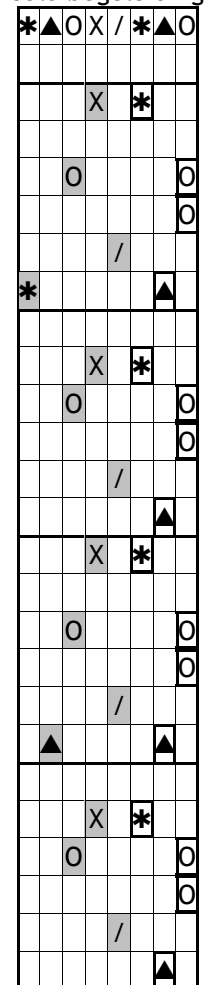
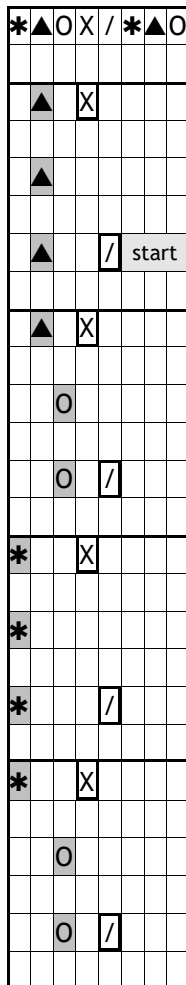




Patroon A  
begeleider

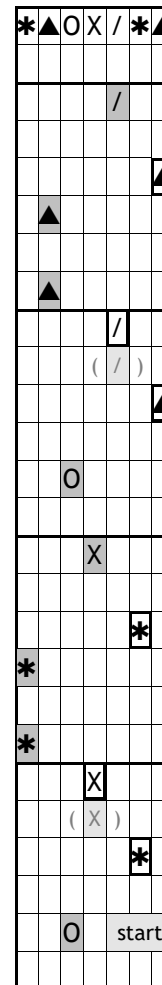
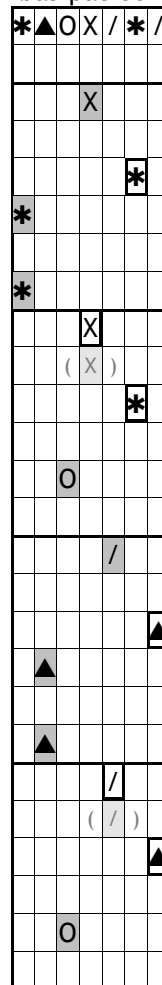


Patroon B1  
solo begeleiding

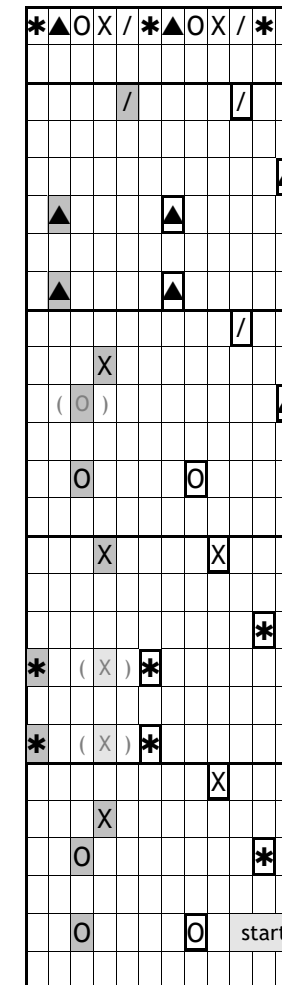
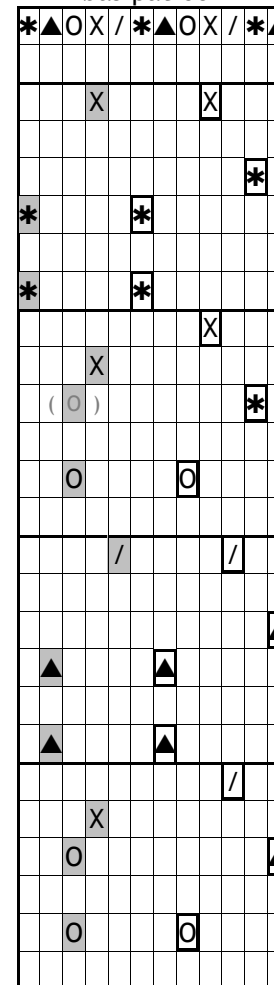


(B2 en B3 zijn eigen  
variaties op wat ik van  
Youssef leerde)

Patroon C1  
bas-patroon

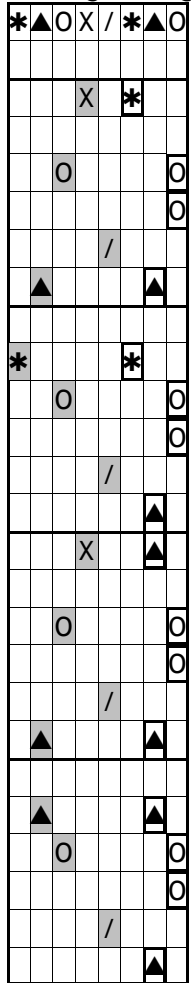


Patroon C2  
bas-patroon

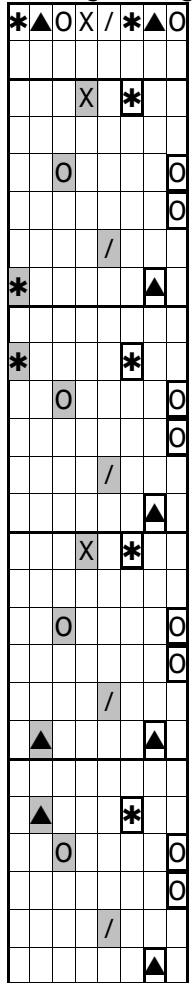


Als je het drieluik Gne Ni / Wa Ère / Patouma Nje Nje wil spelen,  
zijn dit de aansluitingen

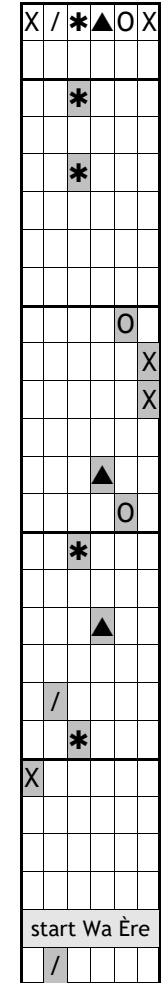
Patroon B2  
solo begeleiding



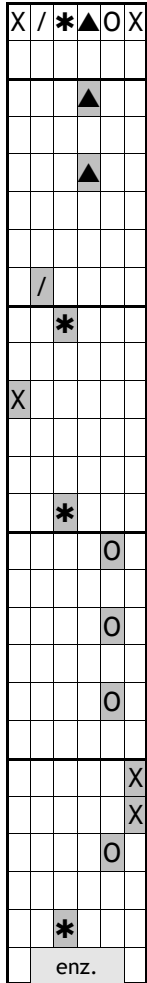
Patroon B3  
solo begeleiding



van Gne Ni  
naar Wa Ère



Wa Ère  
na Gne Ni



van Wa Ère  
naar  
Patouma Nje Nje

